

# Supporting Good Practice in Research Data Management: Edinburgh's Experience

Robin Rice, Data Librarian  
EDINA and Data Library  
Information Services  
University of Edinburgh  
#LIBER, Riga, Latvia: 4th July, 2014



# Ten recommendations for libraries to get started with research data management

Final report of the LIBER working group on E-Science / Research Data Management

Birte Christensen-Dalsgaard et al  
4-7-2012

4. Actively participate in institutional research data policy development, including resource plans. Encourage and adopt open data policies where appropriate in the research data life cycle.



# UoE RDM Policy & Open Access to Data

- “Research data of future historical interest, and all research data that represent records of the University, including data that substantiate research findings, will be offered and assessed for deposit and retention in an appropriate national or international data service or domain repository, or a University repository.”

“The University will provide mechanisms and services for storage, backup, registration, deposit and retention of research data assets in support of current and future access, during and after completion of research projects.”

“Any data which is retained elsewhere, for example in an international data service or domain repository should be registered with the University.”



6. Support the lifecycle for research data by providing services for storage, discovery and permanent access.



# UoE Research Data Management Roadmap (2012-2014)

Data  
Management  
Planning

Active Data  
Infrastructure

Data  
Stewardship

Data Management Support

1. Offer research data management support, including data management plans for grant applications, intellectual property rights advice and information materials. Assist faculty with data management plans and the integration of data management into the curriculum.









# MANTRA

Research Data Management Training



MANTRA is an online course designed for researchers or others planning to manage digital data as part of the research process.



HOME

ABOUT

ACKNOWLEDGEMENTS

DIY TRAINING KIT FOR LIBRARIANS

FEEDBACK

## LEARNING UNITS

 Research data explained 

 Data management plans 

 Organising data 

 File formats & transformation 

 Documentation & metadata 

 Storage & security 

 Data protection, rights & access 

 Sharing, preservation & licensing 

 Software practicals 

- Data handling in SPSS 18
- Data handling in R
- Data handling in ArcGIS 9.3
- Data handling in NVivo 9



Image by Cuna Ekmekcioglu

10. Offer or mediate secure storage for dynamic and static research data in co-operation with institutional IT units and/or seek exploitation of appropriate cloud services.





2. Engage in the development of metadata and data standards and provide metadata services for research data.

7. Promote research data citation by applying persistent identifiers to research data.

8. Provide an institutional Data Catalogue or Data Repository, depending on available infrastructure.



# DataShare – open data repository

Edinburgh DataShare



## Search Edinburgh DataShare

[Advanced Search](#)

## Browse

- Edinburgh DataShare
  - [Research Communities](#)
  - [Date Issued](#)
  - [Data Creators](#)
  - [Titles](#)
  - [Subjects](#)

## My Account

- [Login](#)
- [Register](#)

## RSS Feeds

- [RSS 1.0](#)
- [RSS 2.0](#)

## What is Edinburgh DataShare?

Edinburgh DataShare is an online digital repository of multi-disciplinary research datasets produced at the University of Edinburgh, hosted by the [Data Library](#) in Information Services.

Edinburgh University researchers who have produced research data associated with an existing or forthcoming publication, or which has potential use for other researchers, are invited to upload their dataset for sharing and safekeeping. A persistent identifier and suggested citation will be provided.

## Deposit Your Data



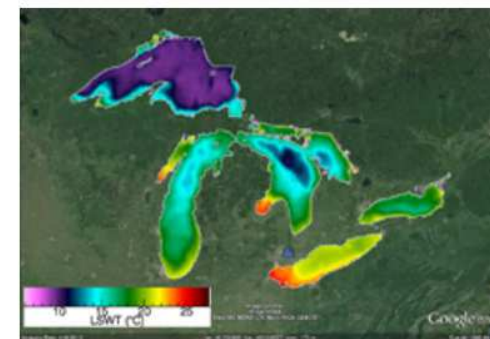
- [How to deposit](#)

## Research Communities in Edinburgh DataShare

Select a community to browse its collections.

- [Business School](#)
- [Edinburgh College of Art](#)
- [Edinburgh Law School](#)
- [Information Services \(IS\)](#)
- [Moray House School of Education](#)
- [Royal \(Dick\) School of Veterinary Studies](#)
- [School of Biological Sciences](#)
- [School of Biomedical Sciences](#)
- [School of Chemistry](#)
- [School of Clinical Sciences](#)
- [School of Divinity](#)

## Spotlight



Great Lakes

New to Edinburgh DataShare - [ATSR Reprocessing for Climate: Lake Surface Water Temperature & Ice Cover \(ARC-Lake\)](#) : School of GeoSciences, Edinburgh Earth Observatory (EEO)

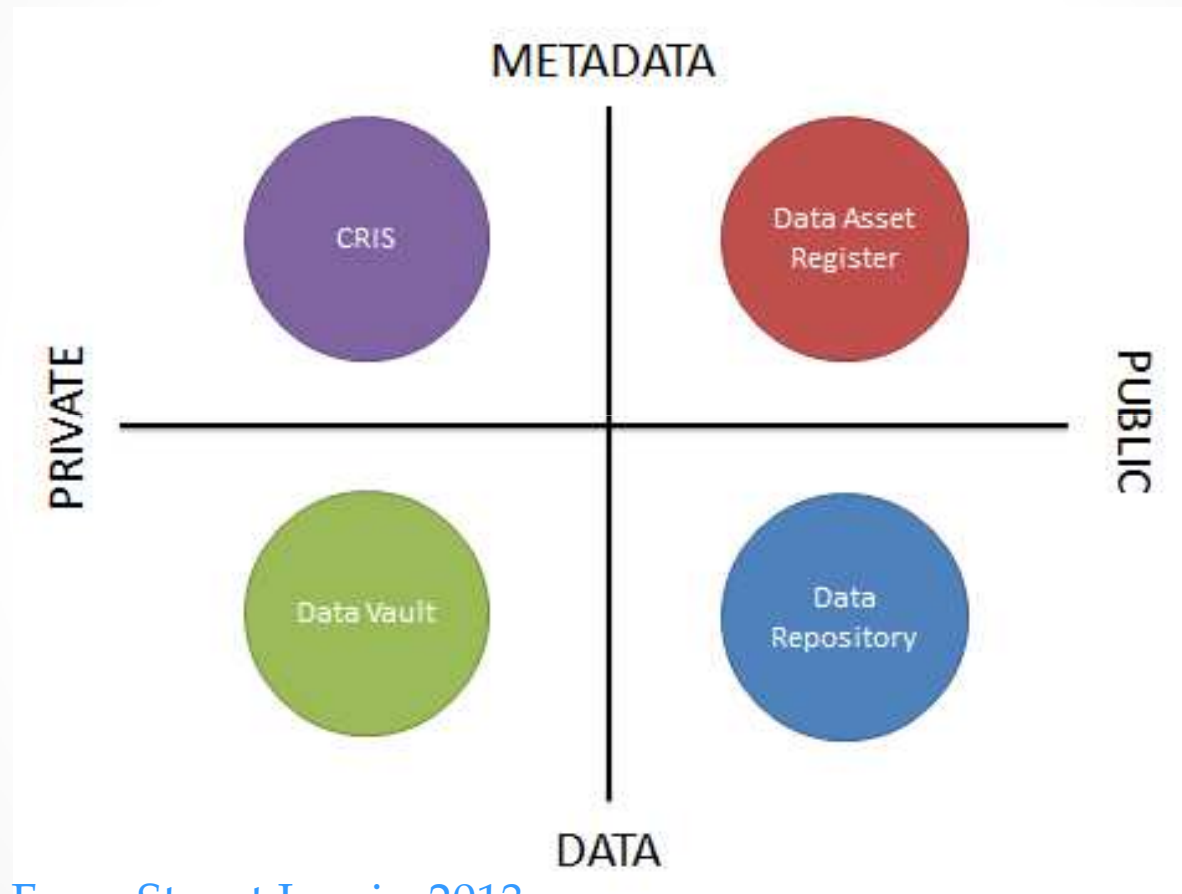
## Information for Depositors

- [About Edinburgh DataShare](#)
- [Checklist for deposit](#)
- [Benefits of deposit](#)
- [Service background](#)
- [Our definitions](#)
- [Service policies](#)

## Latest Items

- [NyadhongoTwongObany\\_songAlaki \(19 May 2014\)](#)
- [BoAwangNyiker\\_songWijrek \(19 May 2014\)](#)

# DataShare & related UoE RDM services



[From Stuart Lewis, 2013:](http://datablog.is.ed.ac.uk/2013/12/06/the-four-quadrants-of-research-data-curation-systems/)

[http://datablog.is.ed.ac.uk/2013/12/06/](http://datablog.is.ed.ac.uk/2013/12/06/the-four-quadrants-of-research-data-curation-systems/)

[the-four-quadrants-of-research-data-curation-systems/](http://datablog.is.ed.ac.uk/2013/12/06/the-four-quadrants-of-research-data-curation-systems/)

5. Liaise and partner with researchers, research groups, data archives and data centers to foster an interoperable infrastructure for data access, discovery and data sharing.





## Dealing with Data – Call For Papers

Posted on June 25, 2014 by Stuart Lewis



### THE UNIVERSITY of EDINBURGH

#### Dealing with Data Conference 2014 Call for Papers

**Date:**

Tuesday 26<sup>th</sup> August 2014, 9am – 1pm

Including a formal launch of the University Research Data Management services by the Principal at 11:30am

**Location:**

University of Edinburgh (room to be confirmed)

**Themes:**

- Data creation
- Data management planning
- Data visualisation
- Data archiving and sharing
- Open Data
- Data re-use
- Electronic lab books
- Data preservation
- Software preservation
- Non-traditional data types
- Data analysis
- New requirements for Research Data Management
- Data infrastructure
- Linked Data

# No silos: interoperation



- Member COAR, RDA, UKCORR, Duraspace, IASSIST
- Pursuing Data Seal of Approval
- Joined [DataCite](#) via British Library
- COUNTER-compliant via [IRUS-UK](#)
- OpenAire guidelines
- Registries: [Databib](#), [Re3data](#), OpenDOAR, DCC Pilot
- Thomson-Reuters [Data Citation Index](#)
- Endorsed by F1000 Research
- Looking at AltMetrics

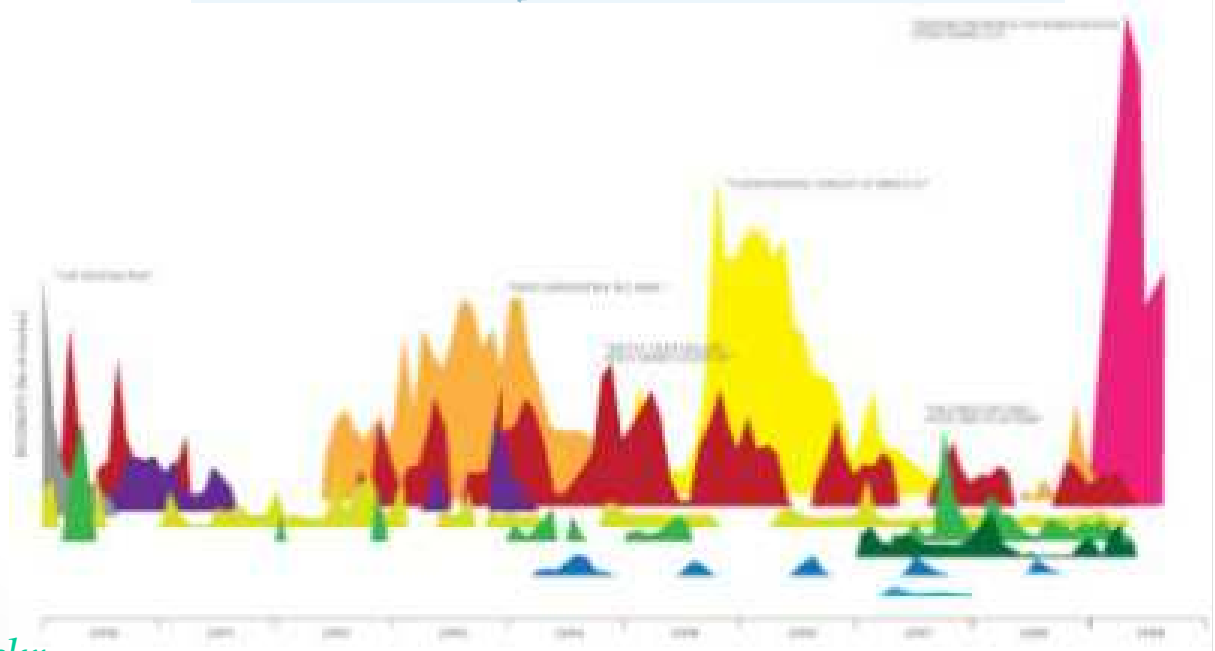
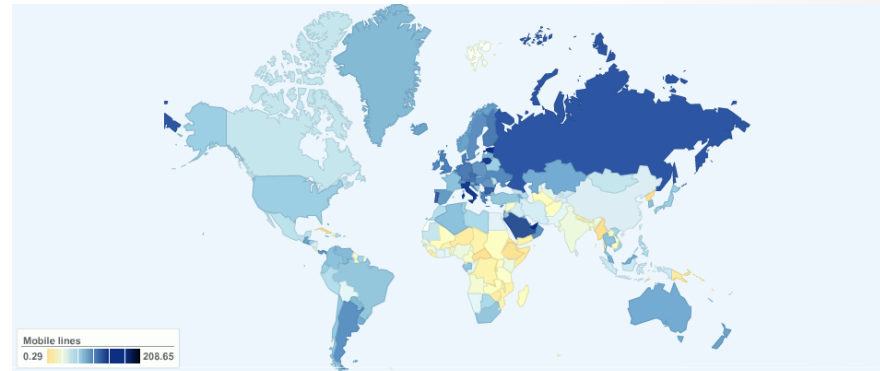
9. Get involved in subject specific data management practice.

3. Create Data Librarian posts and develop professional staff skills for data librarianship.



# UoE Data Library Service

- finding...
- accessing ...
- using ...
- teaching ...
- managing



# Do-It-Yourself Research Data Management Training Kit for Librarians



University of Stirling librarians  
Image by Lisa Haddow

# Thanks & Links

- Email: [R.Rice@ed.ac.uk](mailto:R.Rice@ed.ac.uk)
- MANTRA: <http://datalib.edina.ac.uk/mantra>
- DIY RDM Training Kit:  
<http://datalib.edina.ac.uk/mantra/libtraining.html>
- UoE RDM Website: [www.ed.ac.uk/is/data-management](http://www.ed.ac.uk/is/data-management)
- Data Library: [www.ed.ac.uk/is/data-library](http://www.ed.ac.uk/is/data-library)
- Edinburgh Data Blog: <http://datablog.is.ed.ac.uk>

